

THE BOND

2026-2027



**YOUR OFFICIAL GUIDE TO
FRATERNITY & SORORITY LIFE**



THE UNIVERSITY OF ARIZONA

Fraternity &
Sorority Programs

FRATERNITY & SORORITY PROGRAMS

WHY WE EXIST

Fraternity & Sorority Programs exists to develop innovative approaches that empower fraternity and sorority members to tackle their greatest challenges, create change for the common good, and realize their full potential.

OUR PRIORITIES

Safety and Harm Prevention. We want our fraternity and sorority members to have a fun, memorable, and safe experience. Through training, education, and coaching, we provide the necessary tools chapters need to create a safe, healthy, and responsible environment that allows all members to be successful in their daily endeavors.

Leadership and Educational Development. Our programs help students gain deeper self-awareness, build self-confidence, develop new skills, and ultimately build a better society for themselves and others.

Human Dignity. We support a sense of acceptance, inclusion, and identity for all members of the Arizona Greek community and facilitate programs that seek to better the experiences of historically underserved identities.

Commitment to Innovation. To help organizations and students reach their full potential, we challenge conventional thinking within the fraternity and sorority life profession.

Assessment. We are committed to ongoing assessment practices, prioritizing the evaluation of our programs to drive informed decision-making and foster a culture of continuous improvement.

OUR CORE VALUES

- Integrity
- Compassion
- Exploration
- Adaptation
- Inclusion
- Determination

GOVERNANCE

Fraternities and sororities are self-governing organizations that are responsible for following policies and procedures outlined by their own inter/national organization, their respective governing council, and the University of Arizona. Fraternity & Sorority Programs includes full-time staff, with Master degrees, that support the University's purpose and mission.

THE BOND

CONTENTS

Welcome.....	3	The Sorority Experience.....	21–22
Statement on Hazing	4	Sorority Chapter Profiles.....	23–30
Academics.....	5	How to Join.....	31
Chapter Status.....	6	Recruitment.....	32–33
Family Guide to Going Greek.....	7	Q&A for Recruitment.....	34
Frequently Asked Questions.....	8	Council Executive Boards	36–36
The Fraternity Experience	9–10	Campus Map.....	37
Fraternity Chapter Profiles.....	11–20	Contact Information.....	38

WELCOME TO THE UNIVERSITY OF ARIZONA!

Wildcat Family,

Greek Life came to the University of Arizona in 1915 and has continued to provide incredible experiences for students through charitable work, professional experiences, and close bonds. The purpose of Greek Life is to develop lifelong relationships, set the standard for academic excellence, and positively impact the greater community through philanthropic and service events. As leaders in the Greek Community, we are excited to welcome you into the fraternity and sorority community here at the U of A. The three councils collaborate to enrich the experience of Wildcats throughout their time in college and life after.

The Fraternity & Sorority Programs office is dedicated to supporting all students and providing resources that foster success, personal growth, and development. This continued support has allowed our Greek community room to flourish and thrive. Our community is made up of over 6,500 students across 50+ chapters. That is roughly 15% of the student population, and we continue to increase in size!

We strive to create a welcoming environment where every individual, regardless of background, can find a sense of belonging. Joining a fraternity or sorority is all about finding people who share common interests, values, and beliefs while also celebrating the many backgrounds and experiences that shape us.

We are so excited for you to learn what Greek life is all about and why it remains one of the longest and strongest traditions at the U of A.

Go Greek and Bear Down!!



Interfraternity Council
@UARIZONAIFC
f UAIFC



Panhellenic Council
@ARIZONAPANHELLENIC
f ArizonaPanhellenic



United Sorority & Fraternity Council
@UAUSFC
f UofAUSFC

Other community social media:

Divine 9 @UABLACKGREEKLIFE
Latinx Organizations @UAHSIGGREEKLIFE

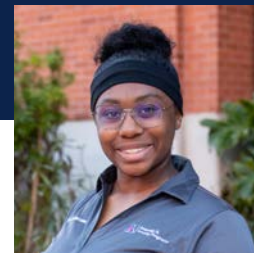
— COUNCIL PRESIDENTS OF THE ARIZONA GREEK COMMUNITY



ADDISON KRUSE
President, Interfraternity Council



GAILOR STROBEL
President, Panhellenic Council



JENISE CLEMONS
President, United Sorority & Fraternity Council

STATEMENT ON HAZING

No individual Wildcat should be demeaned, ridiculed, belittled, or placed in a potentially harmful situation in order to be included in a group at the University of Arizona.

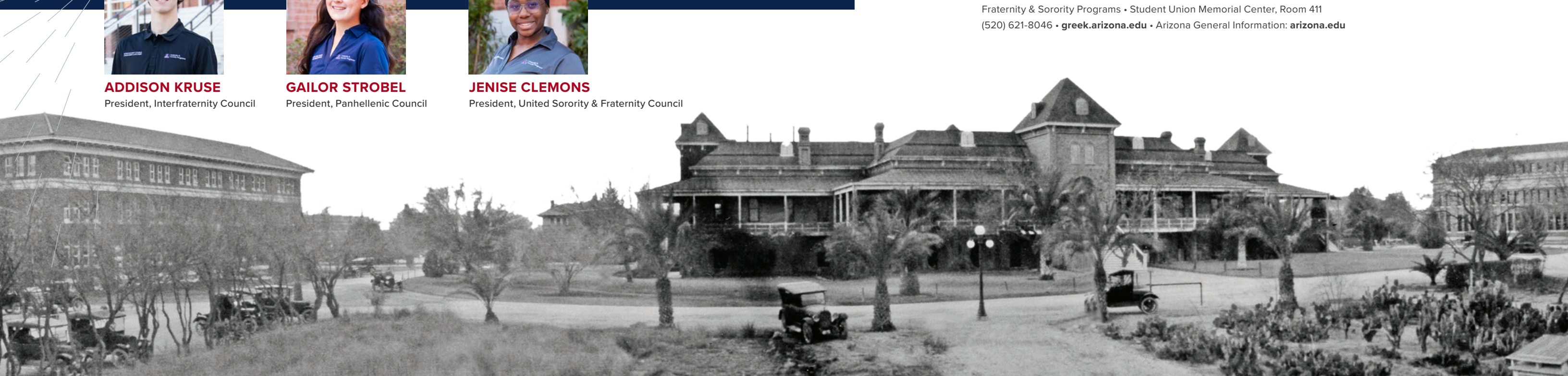
Being part of a campus group can be one of the most meaningful aspects of student life. However, hazing is a hidden and serious problem that undermines the value of these experiences for many individuals. Hazing is a violation of the University of Arizona policy and Arizona State law. The University of Arizona will investigate any hazing report and will always hold individuals or groups accountable if they are found to be hazing. When calling or emailing, it is important to include the name of the organization and as much detail as possible. Unfortunately, investigations cannot occur if the name of the organization and the type of incidents that are occurring are not provided.

Fraternity & Sorority Programs has joined together with Campus Health, Housing & Residence Life, Arizona Athletics, the Parent & Family Association, and the University of Arizona Police Department to create the Hazing Prevention Coalition. To prevent hazing on campus, staff, students, faculty, and families must all work together. Information on prevention and reporting can be found on the Fraternity & Sorority Programs, Dean of Students, and Hazing Prevention Coalition websites.

PLEASE REPORT HAZING TO:

The Hazing Prevention Hotline — (520) 626-HAZE (4293)
The Dean of Students — (520) 621-7057
or UAPD in case of emergency or criminal activity — (520) 621-UAPD (8273)

Fraternity & Sorority Programs • Student Union Memorial Center, Room 411
(520) 621-8046 • greek.arizona.edu • Arizona General Information: arizona.edu





Greek members continue from their first year to sophomore year at an

**14%
HIGHER
RATE**
than non-Greeks.

ACADEMICS

WHY GO GREEK?

DEVELOPMENT

Since the founding of the first fraternity in 1776, fraternities and sororities have helped college students develop strong networks of support on campus and beyond. Joining a fraternity or sorority will enhance your collegiate experience by providing support and resources to help your academic, leadership, and social development.

GRADUATION & RETENTION

Greek students are significantly more likely to remain at the University of Arizona for their sophomore year and are significantly more likely to graduate from the University of Arizona than non-Greek students.

ACADEMIC SUPPORT

Fraternities and sororities offer many resources and programs to enhance the academic experience for their members. Minimum grade point averages are required in each chapter for joining, initiation, and maintenance of good standing. Incentive programs recognize members for their academic achievement and scholastic effort. Academic efforts are self-evident, as approximately 50% of fraternity and sorority members are currently at or above a 3.5 cumulative GPA.

Fraternity & Sorority Programs (FSP) promotes a strong culture of academic excellence through intentional officer training and campus partnerships.

Each semester, FSP hosts an Academic Chair Workshop to equip chapter academic officers with practical tools to support member success. Workshops focus on topics such as GPA tracking, goal setting, accountability strategies, connecting members to campus resources, and building a chapter-wide commitment to scholarship.

We partner with campus academic support offices, including Think Tank and other tutoring and advising services, to ensure members have access to study skills development, tutoring, and academic coaching.

ROLE OF THE CHAPTER ACADEMIC OFFICER



Each chapter has an Academic Officer (Academic or Scholarship Chair) who leads the chapter's academic initiatives. This role typically includes coordinating study hours, promoting academic expectations, connecting members to resources, and supporting members who may need additional assistance.

Through these efforts, we collectively empower chapters to prioritize scholarship as a core value of the fraternity and sorority experience.

Please reference this guide to determine each

CHAPTER'S STATUS

for overall achievement (in points)

 90% OF TOTAL POINTS CHAPTER OF EXCELLENCE	 80% OF TOTAL POINTS CHAPTER OF ACHIEVEMENT	 70% OF TOTAL POINTS CHAPTER OF PROMISE
 60% OF TOTAL POINTS PROBATIONARY CHAPTER	 NON-PARTICIPANT EMERGING CHAPTER	 <60% OF TOTAL POINTS LOSS OF CAMPUS PRIVILEGES

Please reference this guide for

ACCESS & PARTICIPATION

 IS ACTIVELY ENGAGED WITH CAMPUS COMMUNITY CONNECTIONS OR ANOTHER UNIVERSITY OF ARIZONA DEPARTMENT/AFFILIATE	 OUTSTANDING CONDUCT HAS NOT BEEN HELD ACCOUNTABLE BY A JUDICIAL PROCESS IN THE PAST 3 YEARS	 HAS FACILITY WITH ACCESS FEATURES
--------------------------------------------------------------------------------------------------------------------------------------------------------------------------------------------------------------	----------------------------------------------------------------------------------------------------------------------------------------------------------------------------------------------	---------------------------------------------------------------------------------------------------------------------------------

STANDARDS & EXPECTATIONS

The fraternity and sorority community at the University of Arizona has a long and rich history, dating back to 1915. Since that time, fraternities and sororities have had a continual and active presence on campus. In order to ensure that the fraternal community at the University of Arizona is comprised of viable values-based organizations, a set of minimum standards were developed to help guide the mission and activities of our Greek organizations.

The standards take a holistic approach to evaluating chapter activities. They outline the minimum expectations for Greek organizations to abide by and/or exceed in the following key areas: Academics, Leadership & Involvement, Global Citizenship & Human Dignity, Chapter Management, Membership Education & Development, Recruitment/Outreach, and Health & Wellness. Chapters are evaluated every year in order to remain in good standing and be eligible for university awards, services, and goods.

On each chapter's profile in The Bond, you will see a symbol that is used to distinguish the organization's standing in relationship to the Standards of Excellence. Fraternities and sororities that were non-participants are considered emerging chapters and were either on dormancy status or new to the community. A guide is shown above for those statuses. You will see a guide to access and participation symbols above as well. Use these as tools to determine which fraternity or sorority is right for you.

EXPECTATIONS OF FRATERNITY/SORORITY CHAPTERS AND GREEK STUDENTS:

- ▶ Each chapter is expected to have a minimum average GPA of 2.75.
- ▶ Each chapter is expected to follow all federal, state, university, and international/national/local organization laws and policies.
- ▶ Each chapter member is expected to complete a minimum of 8 community service hours each semester.
- ▶ Each member of a fraternity or sorority is expected to engage with educational sessions for personal and professional development.
- ▶ Each new member is required to complete programming designed to educate students on issues related to alcohol, hazing, drug use, and sexual assault prevention.
- ▶ Each chapter member is expected to exemplify the Greek Values of Leadership, Scholarship, Service, and Friendship.
- ▶ Each chapter and chapter member is expected to uphold the Arizona Greek Standards of Excellence and the Greek Community Standards.
- ▶ Each chapter member is expected to adhere to the Arizona Student Code of Conduct.
- ▶ Each chapter member is expected to participate in campus and Tucson community leadership and service opportunities.

FAMILY GUIDE TO GOING GREEK

Welcome to Greek Life at the University of Arizona! Your student has many opportunities for involvement, and we're pleased that they are considering fraternity or sorority membership. By joining a Greek chapter, your student will be joining hundreds of other new members on our campus in search of leadership opportunities, community involvement, and lifelong friendships. The fraternity or sorority experience enhances the rewards of college life. Simply put, Greek Life adds a dimension to the college experience that can't be found in other organizations. Greek Life has a rich history on campus and is one of our most enduring traditions. Arizona fraternity and sorority members hold high academic standards, volunteer regularly, develop and strengthen leadership skills, create a support network, and nurture long-lasting friendships.

HELPFUL HINTS

- ▶ Be supportive of your student's choice to join a fraternity or sorority and the organization they choose, regardless of legacies or family history.
- ▶ Ask for details from your student about the financial aspects of membership.
- ▶ If you have a question about fraternity or sorority life, go to the source and ask the FSP staff.
- ▶ Don't buy into gossip or hearsay.
- ▶ Encourage your student to attend programs sponsored by FSP and the Dean of Students Office.
- ▶ Know the names and phone numbers of the chapter president, new member educator, big brother/big sister, chapter advisor, and house director (if applicable) once your student has joined an organization.
- ▶ Talk with your student! Phone calls, emails, letters, and care packages are always appreciated.
- ▶ Expect to see new t-shirts, photos, and other Greek-letter paraphernalia.
- ▶ Join the Parents & Family Association! They can help you get involved and answer many questions: uafamily.arizona.edu
- ▶ Attend Arizona Family Weekend and participate in family activities with your student's fraternity or sorority.
- ▶ Talk to Arizona staff about hazing or other safety concerns.

SAFETY

Fraternity & Sorority Programs is dedicated to ensuring the safety of all the members of the Arizona Greek Community.

Throughout the recruitment process and the entirety of their membership, students are given information on topics such as campus safety, hazing, sexual assault prevention, and alcohol education.

FSP has strong relationships with the Office of Public Safety and many of its departments, including UAPD, University Risk Management Services, and the Threat Assessment Management team. This partnership means UA Greek students get programming and training resources from subject matter experts and ensures students are educated on creating and maintaining safe experiences.

Additionally, each chapter is required to have a member serve as the health advocate, a trained peer educator who serves as a resource for chapter members.

For more information on safety and students, check out the Office of Public Safety: safety.arizona.edu



FAQs

For more information, visit our website or attend an informational session during orientation.
greek.arizona.edu/fsp/parent-family-resources

Q: What costs are associated with joining a fraternity or sorority?

A: For Interfraternity Council (IFC) fraternities, new members incur one-time expenses such as a bid acceptance and initiation fee. Recurring expenses include: chapter dues, national fees, social fees, and risk management insurance. For organizations with houses, room and board (if living in a chapter facility) may also apply.

Sororities in the Panhellenic Council (PHC) have similar fees.

For chapters in the United Sorority & Fraternity Council (USFC), the totals vary greatly. Encourage your student to inquire about each organization's specific fees.

For Divine 9 (D9) organizations, the expenses paid upon initiation may include the new member and/or initiation fee, pin fee, as well as national, regional, and local dues. The yearly expenses may include national, regional, and local dues in addition to risk management insurance. Dues and fees are not known until a student begins the intake process.

Q: When can my student join a fraternity or sorority?

A: There are both formal recruitment and informal processes, and some chapters may participate in one or both. To find the most up-to-date information, visit the Fraternity & Sorority Programs website: greek.arizona.edu/fsp/fraternity or greek.arizona.edu/fsp/sorority

Q: What leadership opportunities are available to Greek members?

A: As a Greek member, students have the opportunity to be a chapter and/or council officer, enroll in Greek leadership classes, lead a weekend retreat, and become a peer health educator. All members are also encouraged to become involved in other student organizations, have an internship, or hold a job.

Q: Can my student live in the chapter facility as a new member?

A: New members will not receive housing on fraternity or sorority property. Once a student is an initiated member, they will be able to participate in each organization's housing selection process. The process differs for each organization. Only about half of fraternities and sororities have chapter facilities, and primarily sophomores live in the houses.



Q: What kind of accommodations are available for students with disabilities in fraternities and sororities?

A: Please contact FSP to explore disability-related access and accommodations. Many chapter facilities are fully accessible, and chapter officers and governing councils try their best to utilize universal design when developing programs and activities. You may also contact the Disability Resource Center (drc.arizona.edu) for more information on accommodations. Look for the Access Features symbol on chapter profiles for accessible facilities.

Q: What is the University's stance on alcohol and drug abuse?

A: The University of Arizona recognizes that the use of alcoholic beverages by those of legal age is a matter of personal choice. The University requires that those who choose to drink on University property abide by state law and University regulations and expects that such individuals will conduct themselves responsibly, mindful of the rights of others.

Q: How can I find out what organizations are/have been on probationary periods?

A: If an organization is listed under "Organizations on Loss of Recognition Status" on the Chapter Conduct & Judicial Status page of the FSP website, then the University does not recognize it as an official organization. To view the disciplinary status of particular organizations, visit: greek.arizona.edu/judicial

Q: What is the University's stance on hazing?

A: The University of Arizona seeks to promote a safe environment in which students may participate without compromising their health, safety, or welfare. Hazing is a violation of university policy and state law. No individual Wildcat should be demeaned, ridiculed, belittled, or placed in a potentially harmful situation in order to be included in a group at the University of Arizona. For more information, see [page 4](#).

THE FRATERNITY EXPERIENCE

THERE ARE 30 NATIONAL FRATERNITIES ON THE UNIVERSITY OF ARIZONA CAMPUS.

WHICH ONE IS RIGHT FOR YOU?

All chapters at Arizona belong to a governing council. Both the Interfraternity Council and the United Sorority & Fraternity Council are home to fraternities and offer different experiences.

WHAT IS THE INTERFRATERNITY COUNCIL?

The Interfraternity Council (IFC) is the coordinating and governing board of 21 social fraternities at the University of Arizona. IFC is made up of 10 executive officers in charge of various aspects of Greek Life, as well as the president and delegate from each fraternity.

As a whole, the purpose of the IFC is, in accordance with the objectives outline by the North American Interfraternity Conference (NIC), to assist the fraternity system in the development of fraternity members through intellectual, social leadership, and humanitarian pursuits. There is a place for everyone in the IFC community, and the council is committed to protecting the values that chapters uphold for generations to come. The NIC provides direct support, resources, and services to IFC offers, representatives, advisors, and alumni to further the health and success of local fraternity communities.

WHAT IS THE UNITED SORORITY & FRATERNITY COUNCIL?

The United Sorority & Fraternity Council (USFC) was founded on the University of Arizona campus in the spring of 2007. USFC is composed of diverse Greek organizations, allowing them a voice and a connection on a more direct level with the University. This council governs identity-based groups, including Divine 9/Historically Black fraternities and sororities. USFC and all of its member chapters are headquartered at the top floor of the Student Union Memorial Center, Room 411. USFC fraternities add cultural and identity values and ideals to the Greek system.

HOW MUCH DO FRATERNITIES COST?

Fees differ from chapter to chapter. Features such as housing, a meal plan, parking, and various local/national dues will determine the amount each new member and active member pays. Scan the QR code below with the camera on your mobile device or other downloaded app, or visit greek.arizona.edu/cost for more information on specific chapters.



Interfraternity Council



United Sorority & Fraternity Council



Divine 9

WHY JOIN AN IFC CHAPTER?

THE RELATIONSHIPS

Interfraternity Council chapters vary greatly in size, ranging from 20-190 members. Some are small, family-like organizations while others are quite large. The average size is 110 members. The closest bonds are often formed within their own new member class.

LEVELS OF ENGAGEMENT

IFC fraternities are engaged across campus, including leadership roles and intramural sports. IFC chapters raise thousands of dollars each year for Tucson's *Emerge! Center Against Domestic Abuse*.

THE INVOLVEMENT

IFC fraternities place a high level of importance on academics, leadership, and chapter involvement. Chapters also have a variety of social and recreational activities such as formals, theme parties, and fun philanthropic events. Most IFC groups have a chapter facility (house); however, the vast majority of members do not live in. Organizations without housing have an equally fulfilling experience utilizing campus and Tucson locations for dinners, meetings, socials, and other events.

WHY JOIN A USFC CHAPTER?

THE BONDS

There are 9 fraternities within the United Sorority & Fraternity Council, which are smaller, tight knit, family-like organizations with an average size of 5 members per chapter. Not only are fraternity members close with another, they are also close with other USFC sororities and fraternities at Arizona as well as across the country.

THE EXPERIENCE

USFC fraternities are cultural and identity-based, meaning they were founded to celebrate a culture such as Asian, Latinx, LGBTQ+, African American, Native American, or multicultural. This does not mean you must be of a specific identity to join—to the contrary!—those with an appreciation for the culture or identity are certainly welcomed.

SERVICE TO THE LOCAL COMMUNITY

USFC chapters are committed to hands-on service to the community and often serve underrepresented populations right here in Tucson with events like Adopt-a-Street and volunteering with the Boys and Girls Club.

LOWER COST

USFC dues are affordable, and council recruitment events are totally free!





ALPHA GAMMA RHO

Alpha Gamma Rho is the fraternity sharing a common bond within a dynamic, global agriculture committed to fostering the highest values and providing each and every brother with superior lifelong personal development and professional success. The purpose of AGR is to make better men, and through them, a broader and better agriculture. In AGR, you'll get to experience both social and professional opportunities within fraternity life. AGR is for young men interested in the agriculture, food, or fiber industries. Alpha Gamma Rho values leadership, scholarship, and above all, brotherhood.

NICKNAME	AGR	PHILANTHROPY	Arizona FFA
FOUNDED (LOCAL)	December 12, 1959	FOUNDED (NATIONAL)	April 4, 1908



ALPHA PHI ALPHA FRATERNITY, INC. | Zeta Theta Chapter

Alpha Phi Alpha, the first intercollegiate Greek-letter fraternity established for African American men, was founded by seven college men who recognized the need for brotherhood among African descendents in the United States. Alphas live out the three aims of the organization—manly deeds, scholarship, and love for all mankind—to develop leaders, promote brotherhood and academic excellence, and provide service and advocacy for communities.

NICKNAME	Alphas	PHILANTHROPY	Project Alphas; Go to High School, Go to College; Brother's Keeper
FOUNDED (LOCAL)	April 12, 1968	FOUNDED (NATIONAL)	December 4, 1906



BETA THETA PI

Beta Theta Pi is seeking compassionate leaders, scholars and men of principle to reestablish its Arizona chapter. Charged with crafting an experience that bucks the stigma traditionally associated with "frats," refunding fathers shape the chapter's culture for generations to come. If you're looking to make a lasting impact at Arizona, joining Beta may be right for you.

NICKNAME	Beta	PHILANTHROPY	TBD
FOUNDED (LOCAL)	October 13, 1959	FOUNDED (NATIONAL)	August 8, 1839



DELTA CHI

Delta Chi believes in developing the whole person and helping our men become better people, not just better Delta Chis, who are committed to making an impact on the world around them. We cultivate inclusive environments for any person who self-identifies as a man, who reflects and lives our values of Promoting Friendship, Developing Character, Advancing Justice, and Assisting in the Acquisition of a Sound Education. It's through these values that our members become men of action and grow to become the best version of themselves while living, leading, and growing each day with integrity through the Brotherhood of a Lifetime!

NICKNAME	D-Chi	PHILANTHROPY	V Foundation for Cancer Research
FOUNDED (LOCAL)	May 2, 1925	FOUNDED (NATIONAL)	October 13, 1890



DELTA KAPPA EPSILON

Delta Kappa Epsilon is devoted to finding men who are Gentlemen, Scholars, and Jolly-Good Fellows. DKE strives to develop a culture and an expectation of men who perform in the top tier of students at their institutions and a vibrant network of alumni who are motivated to stay involved with the fraternity after graduation. Our brothers pride themselves on being the most involved men across campus, creating relationships with all the stakeholders within our community. DKE has produced 5 U.S. Presidents, over 170 members of the U.S. Congress, hundreds of CEOs of Fortune 500 companies, and numerous star athletes and actors.

NICKNAME	DKE, Deke	PHILANTHROPY	The Movember Foundation
FOUNDED (LOCAL)	August 24, 2020	FOUNDED (NATIONAL)	June 22, 1844





DELTA SIGMA PHI

Founded in 1899 at City College of New York, Delta Sigma Phi is among the nation's largest social fraternities. Delta Sig is looking for future leaders to carry the ideals of our founders. If you are looking for a brotherhood that will enhance your college experience, Delta Sigma Phi is for you.

NICKNAME	Delta Sig	PHILANTHROPY	American Red Cross
FOUNDED (LOCAL)	November 14, 1948	FOUNDED (NATIONAL)	December 10, 1899



KAPPA ALPHA PSI FRATERNITY, INC. | Delta Omicron Chapter

Kappa Alpha Psi unites college men of culture, patriotism, and honor in a bond of fraternity. With the fraternity's fundamental purpose of achievement, members of Kappa Alpha Psi have gone on to become doctors, lawyers, scholars, politicians, activists, entrepreneurs, and professional athletes. Kappas have also been tirelessly committed to service of the public interest, raising more than \$1 million for St. Jude Children's Hospital.

NICKNAME	Kappas, Nupes	PHILANTHROPY	St. Jude's Children Research Hospital
FOUNDED (LOCAL)	May 26, 1956	FOUNDED (NATIONAL)	January 5, 1911



DELTA TAU DELTA

Delta Tau Delta fosters leaders and innovators, advocates, change agents, and community servants by promoting self-discovery, skills development, and relationship building. Delta Tau Delta's principles are Truth, Courage, Faith and Power. Its mission is simple but straightforward, "Committed to Lives of Excellence." Members are committed to living lives that reflect themselves, the Fraternity, and every part of their being to a level of excellence.

NICKNAME	Delt, DTD	PHILANTHROPY	Juvenile Diabetes Research Foundation
FOUNDED (LOCAL)	April 11, 1959	FOUNDED (NATIONAL)	1858



KAPPA SIGMA

Kappa Sigma is focused upon the Four Pillars of Fellowship, Leadership, Scholarship, and Service. As a values-based men's fraternity, Kappa Sigma aims to complement and enhance the educational mission of the host institution, promote the ideal of Brotherhood, actively contribute to the personal growth and development of its members, promote ethical behavior and decision-making, and encourage service to others.

NICKNAME	Kappa Sig	PHILANTHROPY	Military Heroes Campaign
FOUNDED (LOCAL)	March 24, 2023	FOUNDED (NATIONAL)	December 10, 1869



KAPPA ALPHA ORDER

Kappa Alpha Order has a focus on heritage and tradition but takes greatest pride in being known as "The Modern Gentlemen." While in college, KA helps its members develop their values-set and experiences to point them in a great direction for their future. This national brotherhood espouses the values of gentility, service, brotherhood, leadership, knowledge, and excellence. We prepare our members to not only achieve academically but also to strive to be the best possible people and leaders we can become.

NICKNAME	KA, The Order	PHILANTHROPY	Muscular Dystrophy Association
FOUNDED (LOCAL)	December 21, 1949	FOUNDED (NATIONAL)	December 21, 1865



LAMBDA SIGMA UPSILON LATINO FRATERNITY, INC.

Lambda Sigma Upsilon Latino Fraternity, Inc. is a Latino-based but not exclusive Greek-lettered fraternity, founded at Rutgers University–New Brunswick, NJ. The official motto of the fraternity is "Latinos Siempre Unidos" (Latinos Always United), thus the acronym "LSU". The founders developed four goals that would embody the purpose of LSU: academic excellence, promote cultural awareness and diversity, being role models to the community, and brotherhood.

NICKNAME	Upsilon, LSU	PHILANTHROPY	HIV/AIDS research and awareness
FOUNDED (LOCAL)	November 16, 2023	FOUNDED (NATIONAL)	April 5, 1979



LAMBDA THETA PHI LATIN FRATERNITY, INC.

Lambda Theta Phi is a Latino-founded multicultural fraternity focused on community service and the personal and professional development of its members. The ideals of the brotherhood are Academic Excellence, Brotherhood, Leadership, Latino Unity and Service. On a daily basis, the brothers live up to these ideals and contribute through events such as the chapter's annual 24-hour toy drive for local Tucson children during the holiday season.

NICKNAME	Lambdas	PHILANTHROPY	Congressional Hispanic Caucus Institute (CHCI)
FOUNDED (LOCAL)	February 27, 2005	FOUNDED (NATIONAL)	December 1, 1975



OMEGA DELTA PHI FRATERNITY, INC.

Omega Delta Phi is a Service/Social fraternity dedicated to the needs and concerns of the community. The purpose of Omega Delta Phi is and shall be to promote and maintain the traditional values of Unity, Honesty, Integrity, and Leadership. This Brotherhood was founded in order to provide, to any man, a diverse fraternal experience that coincides with a higher education.

NICKNAME	ODPhi	PHILANTHROPY	Wounded Warrior Project
FOUNDED (LOCAL)	September 28, 1990	FOUNDED (NATIONAL)	November 25, 1987



OMEGA PSI PHI FRATERNITY, INC. | Alpha Epsilon Chapter

Omega Psi Phi Fraternity, Inc. was founded at Howard University in Washington, D.C., adopting the motto "friendship is essential to the soul." For more than 100 years, Omega Psi Phi has been a leading organization for achieving academic excellence, developing leaders, and promoting brotherhood. These educated men are dedicated to the Cardinal Principles of manhood, scholarship, perseverance, and uplift.

NICKNAME	Omeegas, Ques, Da Bruhz, Sons of Blood & Thunder	PHILANTHROPY	NAACP, Feed the Homeless, Blood Donation
FOUNDED (LOCAL)	October 1, 1946	FOUNDED (NATIONAL)	November 17, 1911



PHI BETA SIGMA FRATERNITY, INC. | Alpha Alpha Epsilon Chapter

Phi Beta Sigma Fraternity, Inc. was founded at Howard University in Washington, D.C., January 9, 1914, by three young African-American male students. The Founders wanted to organize a Greek letter fraternity that would truly exemplify the ideals of brotherhood, scholarship, and service. Phi Beta Sigma is proud to have the first black-owned fraternity house recognized by the University.

NICKNAME	Sigas	PHILANTHROPY	Sigma Economic Empowerment Development (SEED)
FOUNDED (LOCAL)	March 19, 1990	FOUNDED (NATIONAL)	January 9, 1914



PHI DELTA THETA

Phi Delta Theta is committed to helping men to become the greatest version of themselves, cherishing and building the strongest relationships of our lives, professionally and personally. The chapter teaches men to balance their lives according to the principles of Friendship, Sound Learning, and Rectitude. The chapter celebrates the uniqueness of individuals, and through encouragement, values, example, and brotherhood, empowers brothers to exceed personal expectations.

NICKNAME	Phi Delt	PHILANTHROPY	The LiveLikeLou Foundation (ALS Reserach)
FOUNDED (LOCAL)	May 5, 1923	FOUNDED (NATIONAL)	December 26, 1848



PHI GAMMA DELTA

Phi Gamma Delta unites men in enduring friendships, stimulates the pursuit of knowledge, and builds courageous leaders who serve the world with the best that is in them. FIJIs live by the values of Friendship, Knowledge, Service, Morality, and Excellence. Phi Gamma Delta is "Not For College Days Alone." Our brothers may graduate from their higher education institutions, but they never graduate from Phi Gamma Delta. They carry with them lifelong friendships, plus skills and experiences from their undergraduate years.

NICKNAME	FIJI	PHILANTHROPY	The United Service Organization (USO)
FOUNDED (LOCAL)	April 18, 1931	FOUNDED (NATIONAL)	May 1, 1846





SIGMA ALPHA EPSILON

Founded upon the values of friendship, scholarship, leadership, and service, SAE aims to better the world around us. The Arizona Alpha Chapter aims to better our community through service and philanthropy along with living by the values outlined by the True Gentleman. The brothers of SAE are held to high standards in order to increase the good in the world.

NICKNAME	SAE	PHILANTHROPY	Be The Match
FOUNDED (LOCAL)	March 2, 1917	FOUNDED (NATIONAL)	March 9, 1856



SIGMA LAMBDA BETA INTERNATIONAL FRATERNITY, INC.

Sigma Lambda Beta International Fraternity, Inc. embraces the principles of Brotherhood, Scholarship, Community Service, and Cultural Awareness. The mission of SLB is to nurture and further a dynamic, values-based environment which utilizes the historically Latino-based fraternity as a catalyst to better serve the needs and wants of all people. Sigma Lambda Beta believes in fairness, opportunity, and equality among all men no matter their race, culture, sexual orientation, or faith.

NICKNAME	SLB, Betas	PHILANTHROPY	American Heart Association
FOUNDED (LOCAL)	March 29, 1997	FOUNDED (NATIONAL)	April 4, 1986



SIGMA ALPHA MU

At its core, Sigma Alpha Mu (Sammy) is a brotherhood fostered through mutual moral aid and support and has driven a tradition of excellence. This tradition is exemplified through academic success, professional success, campus involvement, and a desire to serve. Sammy, in loyalty to its historically Jewish values, welcomes leaders, men of innovation, and men of integrity.

NICKNAME	Sammy	PHILANTHROPY	Alzheimer's Association
FOUNDED (LOCAL)	December 7, 1962	FOUNDED (NATIONAL)	November 26, 1909



SIGMA NU

Sigma Nu enhances the experience of its members and builds a sense of community in a way that generates a desire to invest time, talent, and treasure in the development of both the organization and its future members, which is recognized by all as contributions to the greater good. Sig Nu's vision: Excelling with Honor.

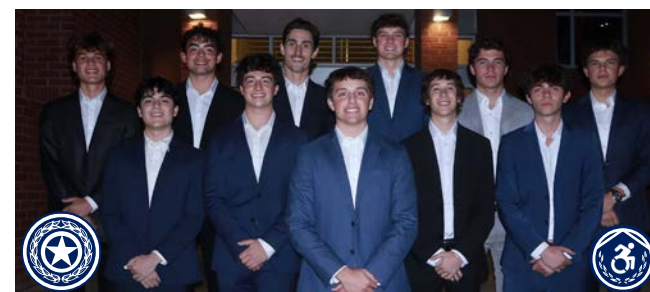
NICKNAME	Snu	PHILANTHROPY	Women's Warriors
FOUNDED (LOCAL)	June 3, 1918	FOUNDED (NATIONAL)	January 1, 1869



SIGMA CHI

Sigma Chi at Arizona cultivates and maintains the high ideals on which Sigma Chi was founded: Friendship, Justice, and Learning. Emphasizing high academic standards, leadership positions, philanthropy, and brotherhood, Sigma Chi also provides a helping hand through brotherhood for the achievement of purposeful living—both in the college community and in the years to follow.

NICKNAME	Sigs	PHILANTHROPY	Huntsman Cancer Foundation
FOUNDED (LOCAL)	April 23, 1921	FOUNDED (NATIONAL)	June 28, 1855



SIGMA PHI EPSILON

Sig Ep strives to preserve the values that fraternities were founded upon and challenge the negative stereotypes that fraternity members face. We are committed to building balanced men through the Greek philosophy of sound mind and sound body. With a focus on high academic achievement and leadership development, we provide a unique member development program that challenges members to grow as individuals and become successful in all facets of life.

NICKNAME	Sig Ep	PHILANTHROPY	Big Brothers / Big Sisters
FOUNDED (LOCAL)	May 8, 1954	FOUNDED (NATIONAL)	November 1, 1901



SIGMA TAU GAMMA

Sigma Tau Gamma is a national college fraternity founded in 1920 by 17 World War One veterans who envisioned to build Noble Generations of Men. Founded as a society of men who endeavor forward, members aim to pursue the highest ideals of Manhood, Brotherhood, and Nobility. The fraternity's members dedicate themselves to a Path of Principles: Learning, Leadership, Citizenship, Brotherhood, Integrity, and Excellence.

NICKNAME	Sig Tau	PHILANTHROPY	Special Olympics
FOUNDED (LOCAL)	April 7, 2018	FOUNDED (NATIONAL)	June 28, 1920



TAU KAPPA EPSILON

Tau Kappa Epsilon is one of the largest collegiate men's social fraternities in North America with over 272,000 initiated members and 246 active chapters and colonies. TKE's mission is to aid men in their mental, moral, and social development for life. With nearly 12,000 collegiate members, TKE contributes to the advancement of society through the personal growth of our members and service to others. TKE builds Better Men for a Better World.

NICKNAME	Teke	PHILANTHROPY	St. Jude Children's Research Hospital
FOUNDED (LOCAL)	January 14, 1967	FOUNDED (NATIONAL)	January 10, 1899



TAU PSI OMEGA FRATERNITY, INC.

The University of Arizona Chapter of Tau Psi Omega Fraternity, Inc. was established to cultivate principled leaders grounded in Faith, Unity, Knowledge, Diversity, and Servitude. As a newly chartered chapter, we are committed to building a strong foundation of brotherhood while actively serving the Tucson community and contributing to the continued advancement of our national organization.

NICKNAME	Tau Psi	PHILANTHROPY	Community Support for Children/Youth in Hermosillo, Mexico
FOUNDED (LOCAL)	November 3, 2025	FOUNDED (NATIONAL)	September 14, 1996



THETA DELTA CHI

Since 1847, Theta Delta Chi has believed that it is the duty of every member to improve himself intellectually, morally, and socially through friendship. The brothers of TDX seek to live out the slogan "Our Hearts Are United" and enjoy engaging in service and philanthropic work for the Special Olympics and Autism Speaks.

NICKNAME	TDX	PHILANTHROPY	Bro's United (Autism Support)
FOUNDED (LOCAL)	February 11, 2017	FOUNDED (NATIONAL)	October 31, 1847



THETA XI

The Purpose of Theta Xi is to provide a college home environment for its active members in which fellowship and alumni guidance lead to wholesome mental, moral, physical, and spiritual growth. To that end, Theta Xi actively supports and augments college and community efforts to make individual members more mature and chapter groups more useful units of society.

NICKNAME	Theta Xi	PHILANTHROPY	Habitat for Humanity
FOUNDED (LOCAL)	November 18, 2017	FOUNDED (NATIONAL)	April 29, 1864



ZETA BETA TAU

The mission of Zeta Beta Tau Fraternity is to foster and develop in its membership the tenets of its Credo: Intellectual Awareness, Social Responsibility, Integrity, and Brotherly Love in order to cultivate leadership and service within their communities. Zeta Beta Tau seeks to serve the undergraduate Jewish populations at colleges and universities throughout the United States and Canada. All men of good character will be eligible for membership in Zeta Beta Tau.

NICKNAME	ZBT	PHILANTHROPY	Children's Miracle Network Hospital
FOUNDED (LOCAL)	April 26, 1926	FOUNDED (NATIONAL)	December 29, 1898



ZETA PSI

Zeta Psi strives to be the premier international men's fraternal organization dedicated to forging academic excellence and life-long bonds of brotherhood. Through active chapter participation and continuing alumni outreach, Zeta Psi members are committed to the development of leadership, character, and intellect and to the service of their brothers and their communities.

NICKNAME	Zetes	PHILANTHROPY	Zete Kids USA
FOUNDED (LOCAL)	October 23, 2015	FOUNDED (NATIONAL)	June 1, 1847



THE SORORITY EXPERIENCE

THE UNIVERSITY OF ARIZONA IS HOME TO 22 NATIONAL SORORITIES/WOMEN'S FRATERNITIES.

WHICH ONE IS RIGHT FOR YOU?

All chapters at Arizona belong to a governing council. Both the Panhellenic Council and the United Sorority & Fraternity Council are home to sororities and offer different experiences.

WHAT IS THE PANHELLENIC COUNCIL?

The Panhellenic Council (PHC) consists of 10 executive officers from various chapters and representatives from each chapter. The Council meets biweekly to discuss current issues and upcoming events.

The governing council is also responsible for local Panhellenic operations in accordance with the National Panhellenic Conference (NPC). The NPC is a conference of women's private social fraternities and sororities founded in 1902, which includes delegates from the 26 member national and international women's fraternities and sororities at the international level.

WHAT IS THE UNITED SORORITY & FRATERNITY COUNCIL?

The United Sorority & Fraternity Council (USFC) was founded on the University of Arizona campus in the spring of 2007. USFC is composed of diverse Greek organizations, allowing them a voice and a connection on a more direct level with the University. This council governs identity-based groups, including Divine 9/Historically Black fraternities and sororities. USFC and all of its member chapters are headquartered at the top floor of the Student Union Memorial Center, Room 411. USFC fraternities add cultural and identity values and ideals to the Greek system.

HOW MUCH DO SORORITIES COST?

Fees differ from chapter to chapter. Features such as housing, a meal plan, parking, and various local/national dues will determine the amount each new member and active member pays. Scan the QR code below with the camera on your mobile device or other downloaded app, or visit greek.arizona.edu/cost for more information on specific chapters.



WHY JOIN A PANHELLENIC CHAPTER?

THE RELATIONSHIPS

Panhellenic chapters are large organizations ranging from 50-450 members per group. Members often form close relationships with their Big (an upperclassman mentor) and within their own new member class.

PHILANTHROPY FOR THE GLOBAL COMMUNITY

Panhellenic sororities are committed to various national/global organizations, and each chapter raises thousands of dollars each semester for their philanthropy.

THE INVOLVEMENT

Panhellenic sororities place a large amount of importance on academics, leadership, and chapter involvement. Chapters also have a variety of social and recreational activities such as formals, theme parties, and fun philanthropic events. Most Panhellenic groups have a chapter facility (house); however, the vast majority of members do not live in. Organizations without housing have an equally fulfilling experience utilizing campus and Tucson locations for dinners, meetings, socials, and other events.

WHY JOIN A USFC CHAPTER?

THE BONDS

There are 9 sororities within the United Sorority & Fraternity Council, which are smaller, tight knit, family-like organizations with an average size of 12 members per chapter. Not only are sorority members close with another, they are also close with other USFC sororities and fraternities at Arizona as well as across the country.

THE EXPERIENCE

USFC sororities are cultural and identity-based, meaning they were founded to celebrate a culture such as Asian, Latinx, LGBTQ+, African American, Native American, or multicultural. This does not mean you must be of a specific identity to join—to the contrary!—those with an appreciation for the culture or identity are certainly welcomed.

SERVICE TO THE LOCAL COMMUNITY

USFC chapters are committed to hands-on service to the community and often serve underrepresented populations right here in Tucson with events like Adopt-a-Street and volunteering with the Boys and Girls Club.

LOWER COST

USFC dues are affordable, and council recruitment events are totally free!



Panhellenic Council



United Sorority & Fraternity Council



Divine 9





ALPHA CHI OMEGA | Required GPA: high school 3.00, college 2.75

Alpha Chi Omega is devoted to enriching the lives of members through lifetime opportunities of friendship, leadership, learning, and service. This is an organization about you: unique, talented, genuine women looking for a fun and meaningful way to enhance your college experience. It's also about real, strong women who stand by your side, cheer you on, and lead you to a lifetime of fun, fulfillment, leadership, and inspiration.

NICKNAME	AChiO, Alpha Chi	PHILANTHROPY	Domestic Violence Awareness
FOUNDED (LOCAL)	November 15, 2013	FOUNDED (NATIONAL)	October 15, 1885



ALPHA DELTA PI | Required GPA: high school 3.00, college 2.60

Alpha Delta Pi was founded as the first secret society in the world for collegiate women upon four principles: scholarship, leadership, service to others, and sisterhood. The principles established by our founders in 1851 are enduring standards exemplifying the highest ideals of womanhood. Alpha Delta Pi is more than a ritual and more than a symbol; it is a way of life. While first you become a part of Alpha Delta Pi, Alpha Delta Pi then becomes a part of you.

NICKNAME	ADPi	PHILANTHROPY	Ronald McDonald House Charities
FOUNDED (LOCAL)	March 9, 1957	FOUNDED (NATIONAL)	May 15, 1851



ALPHA EPSILON PHI | Required GPA: high school 3.00, college 2.70

Alpha Epsilon Phi is a chapter filled with sisterhood, dedication, and diversity, made up of women from all around the country. AEPi upholds its values of growth, fellowship, and sisterhood. In AEPi, women have the chance to enhance their leadership skills through chairmanships, philanthropies, as well as executive board positions. Alpha Epsilon Phi was derived from the Greek words AEI ESTO PHILO meaning "May Friendship Be Everlasting."

NICKNAME	AEPi	PHILANTHROPY	Elizabeth Glaser Pediatric AIDS Foundation
FOUNDED (LOCAL)	December 14, 1940	FOUNDED (NATIONAL)	October 24, 1909



ALPHA KAPPA ALPHA SORORITY, INC. | Iota Tau Chapter

Alpha Kappa Alpha Sorority, Inc. was founded as the first historically black sorority. Its mission is to cultivate and encourage high scholastic and ethical standards, to promote unity and friendship among college women, to study and help alleviate problems concerning girls and women in order to improve their social stature, to maintain a progressive interest in college life, and to be of "Service to All Mankind." The Iota Tau chapter fulfills this mission through service projects and personal development focused on scholarship, leadership, sisterhood, and service.

NICKNAME	AKAs	PHILANTHROPY	Soles 4 Souls, Autism Awareness Walk, Adopt a Family
FOUNDED (LOCAL)	May 7, 1975	FOUNDED (NATIONAL)	January 15, 1908



ALPHA PHI | Required GPA: high school 3.00, college 2.50

When you join Alpha Phi, you become part of a sisterhood that stretches from coast to coast. As sisters, we hold one another to the high standards set forth by the guiding principles of our Founders: sisterhood, innovation, generosity, and character. Alpha Phi's are committed to lifelong friendships, leadership, academic excellence, personal growth, and community involvement. We cannot wait to welcome you home!

NICKNAME	APhi	PHILANTHROPY	Alpha Phi Foundation - Women's Heart Health
FOUNDED (LOCAL)	March 15, 1926	FOUNDED (NATIONAL)	October 10, 1872



ALPHA PHI GAMMA NATIONAL SORORITY, INC.

Alpha Phi Gamma's Delta Chapter is the first Asian-American Interest Sorority at Arizona and in the State of Arizona. The purpose of APHiG is to bring together all women of different nationalities through bonds of friendship and sisterhood and to provide service and Asian Awareness to the University and surrounding communities for the betterment of society. It promotes scholarship and academic excellence, personal development, and leadership.

NICKNAME	APHiG	PHILANTHROPY	Fight Against Violence Towards Women
FOUNDED (LOCAL)	June 20, 2000	FOUNDED (NATIONAL)	February 1, 1994



CHI OMEGA | Required GPA: high school 3.00, college 2.75

Chi Omega thrives on our founding purposes: friendship, high standards of personnel, sincere learning and credible scholarship, career development, participation in campus activities, and community service. We are proud to support the Make-A-Wish Foundation, both on a local and national level. Founded in 1895, Chi Omega is the largest sorority. Being a sister in Chi Omega offers unforgettable friendships and experiences that truly last a lifetime. We are sisters inspired by our values who serve the world while keeping Chi Omega ever at heart.

NICKNAME	ChiO	PHILANTHROPY	Make-A-Wish Foundation
FOUNDED (LOCAL)	December 11, 1922	FOUNDED (NATIONAL)	April 5, 1895



DELTA DELTA DELTA | coming soon - Fall 2026

Tri Delta was created by women for women, when our Founders envisioned a society that would be "kind alike to all." We are bound by sisterhood, inspired by kindness and committed to belonging, empowering women to lead bravely, act boldly and use our voices to change the world for the better. Our members live out our values of truth, self-sacrifice and friendship each day as they share a lifelong journey of service, sisterhood and growth.

NICKNAME	Tri Delta	PHILANTHROPY	St. Jude's, children's cancer initiatives, Tri Delta's Foundation
FOUNDED (LOCAL)	Fall 2026	FOUNDED (NATIONAL)	November 27, 1888



DELTA GAMMA | Required GPA: high school 3.00, college 2.75

Delta Gamma offers to women of all ages an experience of a lifetime. From endless leadership opportunities to supporting a foundation that is bigger than ourselves, there are plenty of ways allowing women to further their college experience. Its primary purpose is to promote empowerment, create a sense of cultural and educational interest, as well as foster the high ideals of friendship.

NICKNAME	DeeGee	PHILANTHROPY	Service for Sight
FOUNDED (LOCAL)	October 7, 1923	FOUNDED (NATIONAL)	December 25, 1873



DELTA SIGMA THETA SORORITY, INC. | Mu Eta Chapter

Delta Sigma Theta has distinguished itself as an organization that confronts the challenges of African Americans, and all Americans, through programs addressing education, health, international development, and strengthening of the African-American family. It provides an array of public service initiatives through its Five-Point Program: Thrust of Economic Development, Educational Development, International Awareness and Involvement, Physical and Mental Health, and Political Awareness and Involvement.

NICKNAME	Deltas	PHILANTHROPY	Delta Academy
FOUNDED (LOCAL)	May 10, 1975	FOUNDED (NATIONAL)	January 13, 1913



GAMMA ALPHA OMEGA SORORITY, INC.

For over 30 years of sisterhood, Gamma Alpha Omega has inspired women of all races to realize their full potential by living out the motto, "Nos Una Crescemus" (United We Will Grow). At the University of Arizona, the Beta Chapter sisters of Gamma Alpha Omega are highly involved both in and out of the classroom and recognized for its achievements and dedication to the virtues of Honesty, Integrity, Leadership, Scholarship, and Unity.

NICKNAME	GAO, Gamma	PHILANTHROPY	Emeralds for Education, HIV/AIDS Awareness
FOUNDED (LOCAL)	August 8, 1993	FOUNDED (NATIONAL)	January 25, 1993



GAMMA PHI BETA | Required GPA: high school 3.00, college 2.80

Members of Gamma Phi Beta Sorority are proud of our rich and accomplished history, dating back to our founding in 1874. During an era when women were discouraged from attending college, four bold and courageous friends came together to form a women's society. The women at the University of Arizona proudly carry on this legacy through their dedication to building confident women of character who celebrate sisterhood and make a difference in the world around us.

NICKNAME	GPhi, Gamma Phi	PHILANTHROPY	Girls On The Run
FOUNDED (LOCAL)	April 29, 1922	FOUNDED (NATIONAL)	November 11, 1874

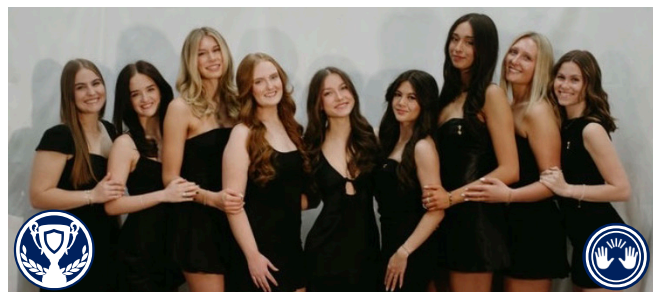




KAPPA KAPPA GAMMA | Required GPA: high school 3.30, college 2.75

Members of Kappa Kappa Gamma pride themselves on being loyal, scholarly, and true sisters. Kappa Kappa Gamma is an organization of women which seeks for every member throughout her life: bonds of friendship, mutual support, opportunities for self-growth, respect for intellectual development, and an understanding of and an allegiance to positive ethical principles. As a member of Kappa Kappa Gamma, one will create unforgettable memories and friendships that will truly last a lifetime.

NICKNAME	Kappa	PHILANTHROPY	Mental Health and Wellbeing
FOUNDED (LOCAL)	January 3, 1920	FOUNDED (NATIONAL)	October 13, 1870



KAPPA ALPHA THETA | Required GPA: high school 3.00, college 2.75

Kappa Alpha Theta is built on the values of leadership, scholarship, service, and personal excellence. As the first Greek-letter fraternity for women, Theta has a long tradition of empowering members to grow, lead, and make a difference. Through sisterhood and shared experiences, our chapter fosters lifelong friendships, academic ambition, and a commitment to service. We strive to create a welcoming space where every member can thrive and exemplify the widest influence for good.

NICKNAME	Theta	PHILANTHROPY	Court Appointed Special Advocates (CASA)
FOUNDED (LOCAL)	September 15, 1917	FOUNDED (NATIONAL)	January 27, 1870



LAMBDA THETA ALPHA LATIN SORORITY, INC.

Lambda Theta Alpha was the first academic-based, Latin sorority established in 1975. LTA promotes the principles of Unity, Love, and Respect. Lambda Theta Alpha is "Latin by tradition, not by definition." LTA is the voice of the universal woman. Lambda Theta Alpha empowers women, creates leaders, and serves the community.

NICKNAME	LTA, Lambda Ladies	PHILANTHROPY	St. Jude Children's Research Hospital
FOUNDED (LOCAL)	April 17, 2010	FOUNDED (NATIONAL)	December 1, 1975



KAPPA DELTA CHI SORORITY, INC.

Kappa Delta Chi is a sorority founded upon four distinct values: Unity, Honesty, Integrity, and Leadership. For over twenty years, Kappa Delta Chi has dedicated itself to serving the community and exceeding academically at the University of Arizona. KDChi became the first Latina-founded, service-based sorority to be recognized at Arizona, and today they are inclusive of all ethnicities and races.

NICKNAME	KDChi	PHILANTHROPY	American Cancer Society
FOUNDED (LOCAL)	November 9, 1991	FOUNDED (NATIONAL)	April 6, 1987



PHI SIGMA RHO | Required GPA: high school 3.00, college 2.50

Phi Sigma Rho National Sorority was founded in 1984 at Purdue University as the first social sorority for engineers. The vision of Phi Sigma Rho is to be the foremost sorority for women in engineering and technical sciences. It fulfills that vision by developing the highest standard of personal integrity and character, promoting academic excellence, supporting personal achievement, and maintaining the bond of sisterhood.

NICKNAME	Phi Rho	PHILANTHROPY	Leukemia and Lymphoma Society
FOUNDED (LOCAL)	April 24, 2016	FOUNDED (NATIONAL)	September 24, 1984



PI BETA PHI | Required GPA: high school 3.00, college 2.75

The foundation of the Pi Beta Phi experience is built on six core values: Integrity, Lifelong Commitment, Honor and Respect, Personal and Intellectual Growth, Philanthropic Service to Others, and Sincere Friendship. Since the establishment of the Arizona Alpha chapter in 1917, members have created and promoted a strong sisterhood, uniting women throughout their lives. Pi Phi raises money for the Read > Lead > Achieve® Initiative, which inspires a lifelong love of reading that can unlock true potential, creating a more literate and productive society.

NICKNAME	Pi Phi	PHILANTHROPY	Read > Lead > Achieve® Initiative
FOUNDED (LOCAL)	August 1, 1917	FOUNDED (NATIONAL)	April 28, 1867



SIGMA GAMMA RHO SORORITY, INC. | Nu Upsilon Chapter

It is the mission of Sigma Gamma Rho Sorority, Inc. to enhance the quality of life for women and their families in the U.S. and globally through community service, civil, and social action. Our goal is to achieve greater progress in the areas of education, health awareness, and leadership development. The Nu Upsilon chapter upholds the national principles of sisterhood, scholarship, & service throughout the University of Arizona community.

NICKNAME	SGRhos	PHILANTHROPY	Project Reassurance, Operation BigBookBag, Women's Wellness Initiative, Swim 1922, Project Cradle Care, Annual Youth Symposium
FOUNDED (LOCAL)	January 15, 1994	FOUNDED (NATIONAL)	November 12, 1922



SIGMA KAPPA | Required GPA: high school 3.10, college 2.90

The purpose of Sigma Kappa Sorority is to provide women lifelong opportunities and support for social, intellectual, and spiritual development by bringing women together to positively impact their communities. Sigma Kappas are respected leaders, who are a positive influence and well-rounded in their academic, social, and philanthropic endeavors. Sigma Kappa is bound together by sincere lifelong friendship, personal growth, service and loyalty.

NICKNAME	Sigma, SigKap	PHILANTHROPY	Alzheimer's Association
FOUNDED (LOCAL)	May 14, 1978	FOUNDED (NATIONAL)	November 9, 1874



SIGMA LAMBDA GAMMA NATIONAL SORORITY, INC.

Sigma Lambda Gamma strives to be the premier organization committed to providing a mechanism of empowerment to all women. Sigma Lambda Gamma promotes academic excellence and higher education for all women via a dedication and incorporation of the sorority principles—Academics, Community Service, Cultural Awareness, Morals & Ethics, and Social Interaction—in our lives.

NICKNAME	SLG, Gammis	PHILANTHROPY	Lupus Foundation, Breast Cancer Awareness, American Heart Association
FOUNDED (LOCAL)	December 6, 2003	FOUNDED (NATIONAL)	April 9, 1990



ZETA PHI BETA SORORITY, INC. | Pi Xi Chapter

Zeta Phi Beta Sorority, Incorporated, is a historically, but not exclusively, black sorority. Our motto is "A community conscious, action-oriented organization," founded on the principles of Scholarship, Service, Sisterhood, and Finer Womanhood. The women of the Prestigious Pi Xi Chapter, promote campus involvement, through programs and partnerships that uplift and impact collegiate women.

NICKNAME	Zetas	PHILANTHROPY	March of Dimes
FOUNDED (LOCAL)	March 30, 1991	FOUNDED (NATIONAL)	January 16, 1920



HOW TO JOIN



The tradition of fraternities and sororities at Arizona is older than “Bear Down,” and we are excited at the possibility of sharing it with you!

The process of joining a fraternity or sorority is called “Recruitment” or “Membership Intake,” and the process varies from council to council. IFC has a process different from PHC which is different from USFC. You might sometimes hear the formal/primary recruitment process referred to as “Rush.” Once you join a fraternity or sorority chapter, you may begin a new member education process. Joining a fraternity or sorority requires making an educated decision about the organization of which you will be a life-long member.



United Sorority & Fraternity Council

If you're interested in any of the USFC organizations, visit the council's page on greek.arizona.edu/usfc and explore the “How to Join” section to receive more information about specific groups.

Any questions about USFC recruitment/membership intake can be sent to the Vice President of Membership Intake & Public Relations: arizonausfc.vpmembership@gmail.com



Divine 9

MEMBERSHIP INTAKE

Membership Intake is the process of joining one of the **Divine 9** fraternities or sororities, and the process differs for each group. Intake may include interviews, group activities, and study of values/traditions—accompanied by the involvement of both undergraduates and advisors. Groups enter the Intake process at various times during the academic year. Average active dues are \$200 and average Intake fee is \$850; however, each organization is different, and Intake fees are not released prior to Informational Meetings.

PARTICIPATING IN INTAKE

Typically, a student must have achieved the following in order to take part:

- ▶ completed their first semester
- ▶ at minimum of 2.50 cumulative college GPA
- ▶ various other requirements including service hours, community involvement, and campus leadership

WAYS TO LEARN ABOUT EACH ORGANIZATION

- ▶ Explore the national websites of each of the organizations
- ▶ Attend Meet the Greeks and other council or chapter events
- ▶ Research the philanthropic/service focus of each group
- ▶ Meet current members and attend chapter-sponsored events

Visit greek.arizona.edu/usfc/how-join and complete the Interest Form to receive more information on Divine 9 events and member organizations.

WHAT IS RECRUITMENT?

Both IFC and PHC host formal/primary recruitment each Fall Semester. It is an opportunity to visit each IFC/PHC organization on the Arizona campus. Potential new members (PNMs) will be given the opportunity to learn about every chapter and what each has to offer. As the process continues, PNMs will visit fewer chapters and will make a final decision by selecting the right group for them.

GET COMFORTABLE

Recruitment takes place in August and September. It is still very hot in Arizona during these weekends, and potential new members will be spending a lot of time outside. Keep this in mind when deciding what to wear. Lighter colors and fabrics that breathe are highly recommended. If PNMs want to wear wedges or heels when in events with chapters, we recommend bringing flip flops to change into when walking in between events. It is also recommended that PNMs wear sunscreen and drink water throughout the days.

WHO RECEIVES A BID?

It is likely that PNMs who remain in the PHC primary recruitment process the entire time will receive a bid (an invitation to join an organization). IFC formal recruitment is a bit more competitive, and less bids are extended even to those who make it through the entire recruitment process. It is important to keep in mind that no PNM is ever guaranteed a bid. Each year, there are PNMs who are released from the process or are not offered a bid.

POTENTIAL NEW MEMBER ORIENTATION

Potential New Member Orientation (PNMO) will provide information about the schedule and all policies regarding formal/primary recruitment. PNMO will take place in-person with recruitment groups. Details including exact time and location are shared with those who register for recruitment. Recruitment counselors can answer any questions you have leading up to PNMO. Attendance and completion of the PNMO is required to participate in recruitment. Failure to attend PNMO will result in removal from the formal/primary recruitment process.

PNMO will not interfere with any mandatory Destination Arizona events for first-year students.

PARENT & FAMILY INFORMATION MEETING

Families of PNMs are invited to attend a virtual informational meeting mid-August—details will be shared directly with those who have registered for recruitment, and recordings will be available after the meeting. Families will receive information about formal/primary recruitment events and a general overview of fraternity/sorority life. Families will also learn how members obtain scholastic support, gain community and volunteer experience, establish networking relationships with alumni, and develop close friendships with chapter members and those in other Greek organizations. Attend to ask questions of Council Executive Board Officers and Fraternity & Sorority Programs Staff.

INTERFRATERNITY COUNCIL FORMAL RECRUITMENT SCHEDULE

What happens at IFC formal recruitment events, and what should I wear?

The first days of formal recruitment, you will learn about each of the chapters through talking with the members and listening to short presentations. These days are long, so dress casual yet put together. This is your chance to make a good first impression. The following days of the process, each fraternity organizes events to best showcase their organization. You will receive information on what the activities are when you check in for the day's events. This will vary based upon which chapters you will be visiting; however, some common events include cookouts, card games, and basketball. The final round of formal recruitment is called “Preference.” Business professional is suggested as fraternities will be sharing what their fraternity means to them in a more formal setting this day.

To get the most up-to-date information about IFC's recruitment, scan the QR code below with the camera on your mobile device or other downloaded app.



Or visit greek.arizona.edu/ifc/how-join in your preferred internet browser.

Have questions about IFC formal recruitment? Email: azifcrecruitment@gmail.com

PANHELLENIC COUNCIL PRIMARY RECRUITMENT SCHEDULE

Do I need to bring anything?

Donation Item—Each year, PNMs have the opportunity to participate in making the community better by donating items. Additional details regarding this opportunity and donations will be communicated in August to everyone who has registered.

Appropriate Attire—PNMs will be provided a shirt they are required to wear for Set II events. We recommend wearing whatever you are comfortable in that makes you feel confident! You can visit [@arizonapanhellenic](#) on Instagram or view the PHC Pinterest at [pinterest.com/uofapanhellenic](#) for examples and ideas. Appropriate attire will vary from day to day depending on the activities.

To get the most up-to-date information about PHC's recruitment, scan the QR code below with the camera on your mobile device or other downloaded app.



Or visit [greek.arizona.edu/panhellenic/how-join](#) in your preferred internet browser.

Have questions about PHC primary recruitment? Email: uapanhellenic.recruitment@gmail.com

WHAT ARE THE OPTIONS OUTSIDE OF THE FORMAL/PRIMARY RECRUITMENT PROCESS?

IFC SPRING RECRUITMENT

In addition to fall recruitment, IFC also hosts spring recruitment. Pre-registration is required. Details are made public towards the end of the Fall Semester.

At the conclusion of both fall and spring recruitment, all IFC chapters are able to extend bids to any PNM through the remainder of the semester. Any student who is interested in joining outside of the formal recruitment process is encouraged to contact the chapter(s) directly. Please note that not all chapters will continue accepting members after Bid Day.

INFORMAL PHC RECRUITMENT

A casual way for students at Arizona to get to know the Panhellenic community is through social events and values-based programming. Informal recruitment allows PNMs to join a chapter in a more personal manner without going through the formal process in the Fall. Only certain chapters are eligible to have an informal process, and PNMs only visit the groups in which they are interested. A list of organizations that host an informal process will be updated after formal recruitment and again at the start of each Spring Semester as not all chapters are always able to participate.

Q&A FOR FORMAL/PRIMARY RECRUITMENT

For answers that vary based on council, refer to these distinctions:



Interfraternity Council



Panhellenic Council

Q: Do I need to register for IFC formal / PHC primary recruitment?

A: Yes! In order to participate in IFC formal or PHC primary recruitment in the Fall and receive a bid from any organization, you must be registered. By registering for formal/primary recruitment, your name and information are made available to all of the IFC and PHC organizations. However, just because you registered does not mean you will receive a bid for membership. Remember, formal and primary recruitment is about getting to know the chapters and letting the chapters get to know you.

Q: Is there a cost for formal/primary recruitment?

IFC Specifics: The registration fee for IFC formal recruitment is \$100 until 11:59pm on August 23rd and increases after that day to \$150. All registrations need to be received by September 9th. These fees are non-refundable.

PHC Specifics: The registration fee for PHC primary recruitment is \$150. If you register by July 19th at 11:59pm, you will be guaranteed a PNM shirt in your size. All registrants must be completed by August 14th at 11:59 pm. These fees are non-refundable.

Q: What is the GPA requirement?*

IFC Specifics: Requirements vary from chapter to chapter, but a general recommendation is a 2.75 core high school GPA for those coming straight from high school and a 2.5 minimum college GPA for those who have at least 12 units taken toward a college GPA. While there is no required GPA to participate in recruitment, IFC strongly recommends a PNM to meet or exceed the general recommended GPA. Core high school GPA will be verified from grades 9–11. If there is a significant increase in core GPA in grade 12, you may submit updates with an official transcript to azifcrecruitment@gmail.com.

PHC Specifics: While there is no required GPA to register for primary recruitment, PHC strongly recommends a minimum 3.0 core high school GPA. The recommended college GPA for those with 12+ college units is a 2.75 to participate in primary recruitment. Most chapters internally require at least a 3.0 core GPA from high school. Requirements vary, so please refer to the PHC sorority chapter profiles (pages 23–30). Core high school GPA will be verified from grades 9–11. If there is a significant increase in core GPA in grade 12, you may submit updates with an official transcript directly to uapanhellenic.recruitment@gmail.com.

*Your core GPA is made up of the Sweet 16 Course Competencies as defined by the Arizona Board of Regents. This means that the GPA utilized for recruitment will only be made up of English, Math, Science, Social Science, Second Language, Fine Arts, and Career & Technical courses.

Q: Where do I live during formal/primary recruitment?

A: Since recruitment occurs after the start of classes, you should already be moved into your living arrangements. If you are living in a dorm, you will move in on your assigned date given to you by Housing & Residential Life. You will not move in early. To learn more about moving into the dorms, you can visit: [housing.arizona.edu](#)

Q: What are recommendations? Do I need them to participate in formal/primary recruitment?

A: Recommendations are letters of introduction from former members of a specific chapter (alumni) written about a PNM. This letter or form tells the organization more about your personality, academics, and activities. Alumni will obtain a form (often a letter is sufficient) supplied by the organization's national office. **Letters of recommendation are not required.**

IFC Specifics: Typically, only those with a significant connection to alumni of an IFC organization such as a family member or close friend will provide a recommendation letter. While a recommendation can be helpful to express strong interest in a particular chapter, it will not negatively affect a PNM's recruitment if they do not have a recommendation, as they are NOT required.

PHC Specifics: To obtain a letter a recommendation we encourage you to reach out to your network. Teachers, family, friends, bosses, etc. It is likely you know a sorority woman without realizing it. Each organization has its own process for letters of recommendation. The alumna should submit her letter via her organization's preferred process. Letters of recommendation are NOT required, and PNMs should not stress about obtaining them or feel unsettled if they don't have letters submitted on their behalf.

Q: What is a "Bid"? How do I receive one? And what if I don't?

A: A bid is an invitation to join an organization's new member program. During the formal/primary recruitment process, you will visit each of the participating chapters to find your best fit. It is mandatory to participate in all events and visit all chapters you are invited to in order to be eligible to receive a bid on Bid Day. To increase your odds of getting a bid, participate with an open mind, be above the GPA requirement, and be yourself. For those not receiving a bid during the Fall process, there are many other ways to get involved at Arizona, and they may pursue membership following the structured recruitment week. Any PNMs who are not invited back to any chapters or who do not receive a bid will receive a phone call prior to the first event of the day.

Q: If I go through recruitment, do I have to join?

A: No! Recruitment is a time to see what fraternity and sorority life can offer you. Going through formal/primary recruitment does not commit you to joining an organization. It is a great way to learn more about campus and meet new people along the way. It is not until the final day of formal/primary recruitment—called "Preference"—that you will make a commitment to participate in an organization's new member process. After participating in initiation, you will be committed to that organization for a lifetime. Initiation dates vary but in general should be no later than 8 weeks from Bid Day.

MEET THE COUNCIL EXECUTIVE BOARDS

WHAT DO THE EXECUTIVE OFFICERS DO?

Each Executive Board works to ensure that there is order amongst the member chapters of each council and unity within the Arizona Greek community as a whole. The councils are completely student-run with a staff member from FSP advising each Executive Board.

STRATEGIC PLANNING

At the start of their terms, all council Executive Boards get together for a retreat to discuss the year ahead. Topics include critical issues in the Arizona Greek community, leadership development, understanding their power and responsibility as council officers, and goals for the year. This time allows the Executive Boards to strategize for how they'll lead the community together.

ROUNDTABLES, EVENTS, AND PROGRAMS

Each officer is in charge of hosting roundtables to benefit their member organizations, events, and/or programs. These gatherings discuss what's happening in the individual councils, are educational in nature, and allow leaders to develop skills and knowledge that they can take back with them to their chapters.

ADVOCATING FOR GREEK ORGANIZATIONS

The council Executive Boards and each of the officers play an important role as liaisons between the fraternities and sororities and the Administration at the University of Arizona. The councils facilitate the space for each of the chapters and the individual members for success and achievement in the Pillars of Greek Life: academics, leadership, service, and friendship.



INTERFRATERNITY COUNCIL

(pictured above)

PRESIDENT

arizonaifcpresident@gmail.com

EXECUTIVE VICE PRESIDENT

arizonaifcvicevp@gmail.com

VP RISK MANAGEMENT

arizonaifcriskmanagement@gmail.com

VP MEMBERSHIP

arizonaifcmembership@gmail.com

VP NEW MEMBER SERVICES

arizonaifcnmservices@gmail.com

VP PROGRAMMING

uaifcprogramming@gmail.com

VP FINANCE

uaifcvpfinance@gmail.com

VP COMMUNICATIONS

arizonaifcvpcommunication@gmail.com

ASSISTANT VP MEMBERSHIP

arizonaifcasstvpmembership@gmail.com

VP DIVERSITY, EQUITY, & INCLUSION

arizonaifcvpdei@gmail.com

PANHELLENIC COUNCIL

(pictured right)

PRESIDENT

uapanhellenic.president@gmail.com

VP OPERATIONS

uapanhellenic.operations@gmail.com

VP MEMBERSHIP

uapanhellenic.membership@gmail.com

VP DIVERSITY, EQUITY, AND INCLUSION

uapanhellenic.inclusion@gmail.com

VP FINANCE

uapanhellenic.finance@gmail.com

VP COMMUNITY STANDARDS

uapanhellenic.comstandards@gmail.com

VP PROGRAMMING

uapanhellenic.programming@gmail.com

VP NEW MEMBER SERVICES

uapanhellenic.nmservices@gmail.com

VP HEALTH PROMOTIONS

uapanhellenic.health@gmail.com

VP PUBLIC RELATIONS

uapanhellenic.publicrelations@gmail.com



UNITED SORORITY & FRATERNITY COUNCIL

(pictured left)

PRESIDENT

arizonausfc.president@gmail.com

VP ACADEMIC ACHIEVEMENT

arizonausfc.vpacademics@gmail.com

VP FINANCE & ADMINISTRATION

arizonausfc.vpfinance@gmail.com

VP COMMUNITY SERVICE & PHILANTHROPY

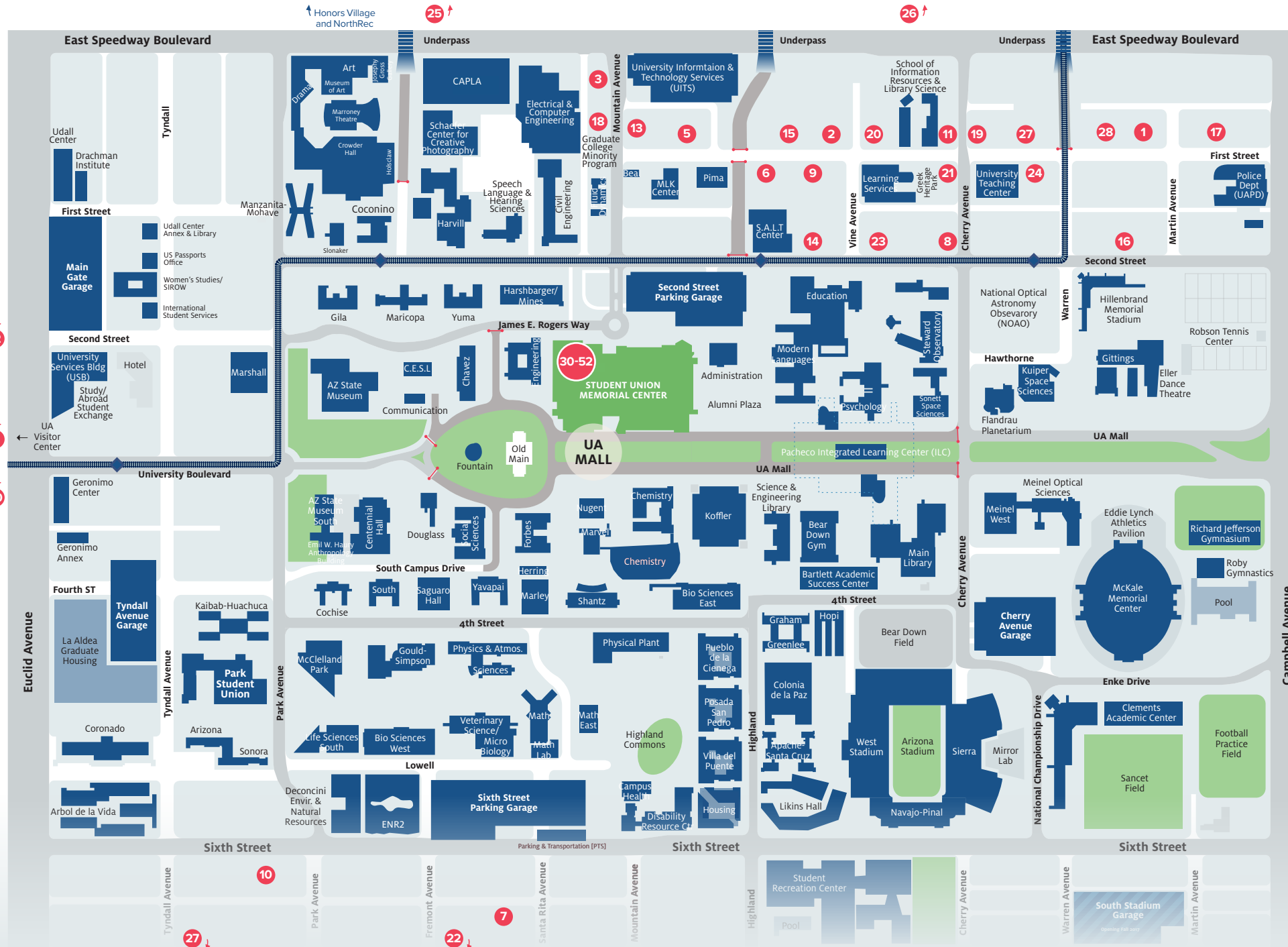
arizonausfc.vpservice@gmail.com

VP LEADERSHIP & RISK REDUCTION MANAGEMENT

arizonausfc.vpleadership@gmail.com

VP MEMBERSHIP INTAKE & PUBLIC RELATIONS

arizonausfc.vpmembership@gmail.com



Scan to follow us on Instagram, or search for @arizona.greklife directly in the app!

Fill in the names and contact information for your records—

PRESIDENT:

ADVISOR:

TREASURER:

NEW MEMBER EDUCATOR:

NATIONAL ORGANIZATION WEBSITE:

HOUSING & RESIDENTIAL LIFE INFO: housing.arizona.edu
(520) 621-6501

CONTACT INFORMATION

CAMPUS (520)

Admissions.....	621-3237
ASUA.....	621-2782
Bursar.....	621-3232
Campus Health.....	621-6490
Campus Store.....	621-2426
CatCard Office.....	626-9162
Center for Career Readiness.....	621-2588
Financial Aid.....	621-1858
Hazing Hotline.....	626-4293
Honors College.....	621-6901
InfoDesk.....	621-7755
Meal Plan Office.....	621-7043
Off-Campus Housing.....	621-5859
Orientation.....	621-5293
Parking & Transportation.....	626-7275
Police (UAPD).....	621-8273
Registrar.....	621-3113
Student Outreach and Success (SOS).....	621-2327
Switchboard.....	621-2211
Wildcat Events Board.....	626-0036

MAP INDEX

- | | | | | |
|---------------------|------------------------|----------------------|------------------------|----------------------|
| 1 Alpha Chi Omega | 7 Delta Chi | 13 Kappa Alpha Theta | 19 Sigma Alpha Mu | 25 Sigma Tau Gamma |
| 2 Alpha Delta Pi | 8 Delta Delta Delta | 14 Kappa Kappa Gamma | 20 Sigma Chi | 26 Tau Kappa Epsilon |
| 3 Alpha Epsilon Phi | 9 Delta Gamma | 15 Kappa Sigma | 21 Sigma Kappa | 27 Theta Delta Chi |
| 4 Alpha Gamma Rho | 10 Delta Kappa Epsilon | 16 Phi Delta Theta | 22 Sigma Nu | 28 Theta Xi |
| 5 Alpha Phi | 11 Gamma Phi Beta | 17 Phi Gamma Delta | 23 Sigma Alpha Epsilon | 29 Zeta Beta Tau |
| 6 Chi Omega | 12 Kappa Alpha Order | 18 Pi Beta Phi | 24 Sigma Phi Epsilon | 30 Zeta Psi |

- 31-52 Alpha Kappa Alpha
Alpha Phi Alpha
Alpha Phi Gamma
Beta Theta Pi
Delta Sigma Phi
Delta Sigma Theta

- Delta Tau Delta
Gamma Alpha Omega
Kappa Alpha Psi
Kappa Delta Chi
Lambda Sigma Upsilon
Lambda Theta Alpha

- Lambda Theta Phi
Omega Delta Phi
Omega Psi Phi
Phi Beta Sigma
Phi Sigma Rho
Sigma Gamma Rho

PARENT & FAMILY PROGRAMS
(520) 621-0884 | uafamily.arizona.edu



ANY QUESTION. JUST ASK.
(520) 621-2327 | sos@arizona.edu

Submit questions anytime. Staff respond to emails and texts from 7am-8pm.

OFFICE OF PUBLIC SAFETY
publicsafety@arizona.edu | safety.arizona.edu



FOR MORE INFORMATION

greek.arizona.edu

(520) 621-8046 | DOS-greek@arizona.edu

**Fraternity & Sorority Programs
1303 E. University Blvd.
Student Union Memorial Center
Room 411
Tucson, AZ 85721**



**THE UNIVERSITY
OF ARIZONA**